

# The Big Picture

TRANSFORMING BC'S HEALTH CARE SYSTEM

**From a traditional system that is episodic and siloed.**

Many people in BC can't get a family doctor or timely access to the full range of care they need. FPs are under stress and the threat of burnout is real. Meanwhile, hospitals are facing unsustainable pressures.

**To a new system that is robust and integrated.**

It's why doctors, divisions of family practice, health authorities and provincial partners are working to create an integrated system of care across BC, where patients have access to quality primary health care that effectively meets their needs.

## THE FOUNDATION

Together, PMHs and PCNs position primary care at the centre of an integrated health care system.

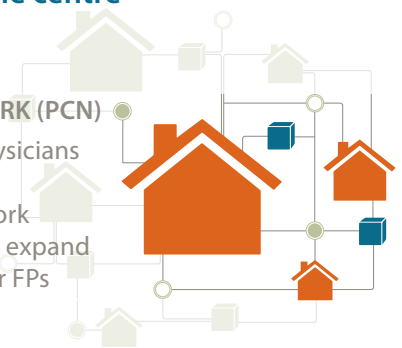


### PATIENT MEDICAL HOME (PMH)

A team-based family practice operating at an ideal level where patients get the majority of their care and FPs focus on diagnoses, patient relationships and longitudinal care.

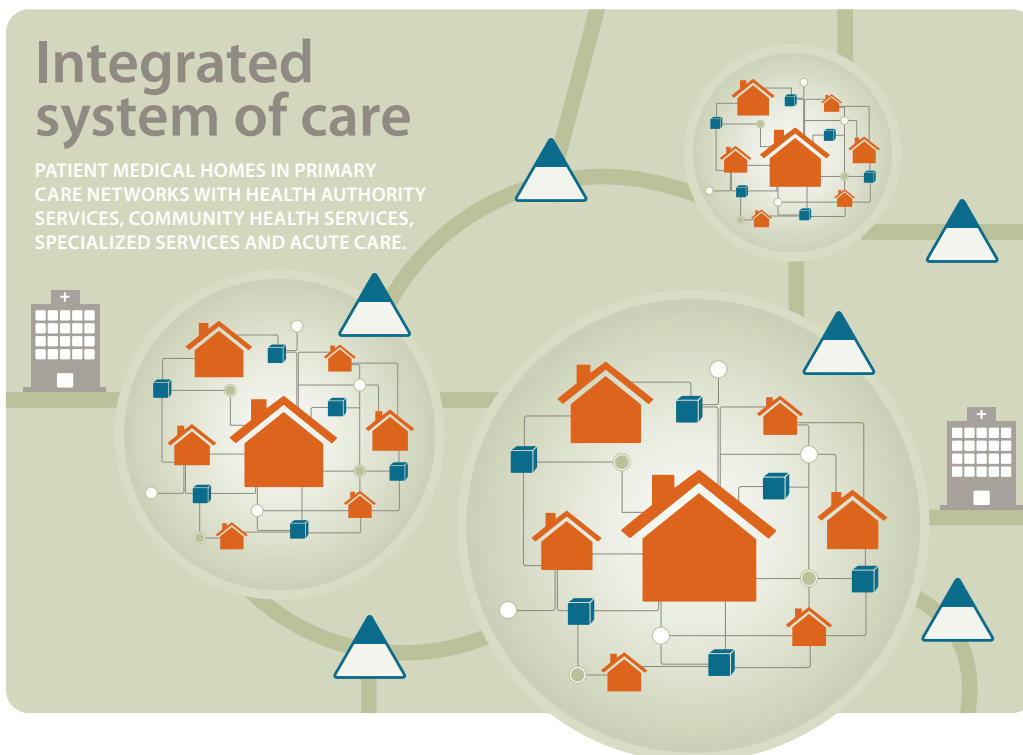
### PRIMARY CARE NETWORK (PCN)

A clinical network of physicians and other providers in a geographic area who work together in new ways to expand team-based supports for FPs and patients.



## Integrated system of care

PATIENT MEDICAL HOMES IN PRIMARY CARE NETWORKS WITH HEALTH AUTHORITY SERVICES, COMMUNITY HEALTH SERVICES, SPECIALIZED SERVICES AND ACUTE CARE.



### BETTER FOR PHYSICIANS

- Shifts focus to diagnoses and patient relationships.
- Brings services together around FPs and patients.
- Eases the burden of doing it alone.
- Attracts and retains FPs.

### BETTER FOR PATIENTS

- Increases attachment to a primary care provider.
- Increases access to a broad range of services.
- Coordinates care and services.

### BETTER FOR THE SYSTEM

- Maximizes health care roles and resources.
- Reduces hospital visits.
- Builds sustainable, quality health care.